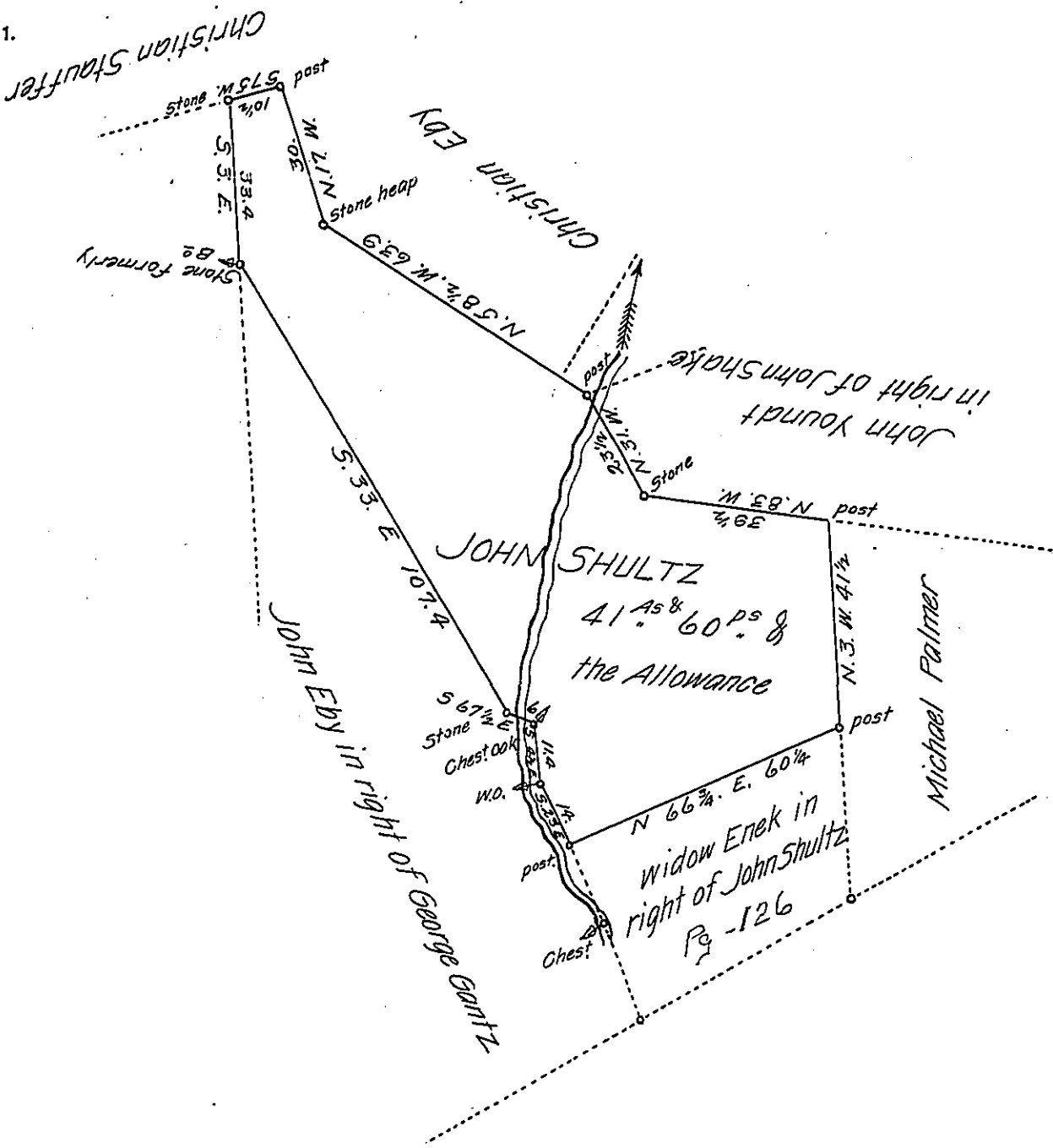


FORM NO. 1.



A draught of a Tract of Land Situate in Warwick Township Lancaster County Containing Forty One acres and Sixty perches and the usual Allowance of Six Per cent for roads &c. Part of 56^{as} & the Allowance by Warrant dated the 19th day of January Anno domini 1753, (granted to John Shultz) Surveyed the 13th of October 1825. Returned for Michael Kline the 25th day of February A. D. 1829.

P. Jacob Hibshman D.S.

To Gabriel Hiester Esqr }
Surveyor General

IN TESTIMONY that the above is a copy of the original remaining on file in the Department of Internal Affairs of Pennsylvania, made conformably to an Act of Assembly approved the 16th day of February 1833, I have hereunto set my hand and caused the Seal of said Department to be affixed at Harrisburg, this twentyfifth day of February 1907.

Asa R. Brown
Secretary of Internal Affairs.